



PROPERTY
SERVICES
LIMITED



25 Lansdowne Street

Hillfields, Coventry, CV2 4FN

Offers In The Region Of £325,000



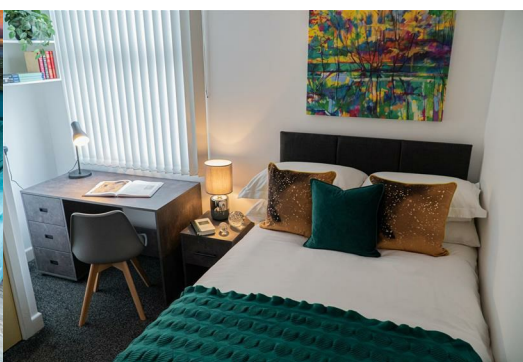
Stunning 5 Bedroom En-suite HMO Property Available To Purchase Within Walking Distance To Coventry City Centre Making This The Perfect Investment For Co-Living Rentals, The property is Currently Achieving An Impressive £2,620pcm (including Bills)

The property itself is modern, stylish & built to facilitate the needs of rental sharers perfectly and comprises of the following...

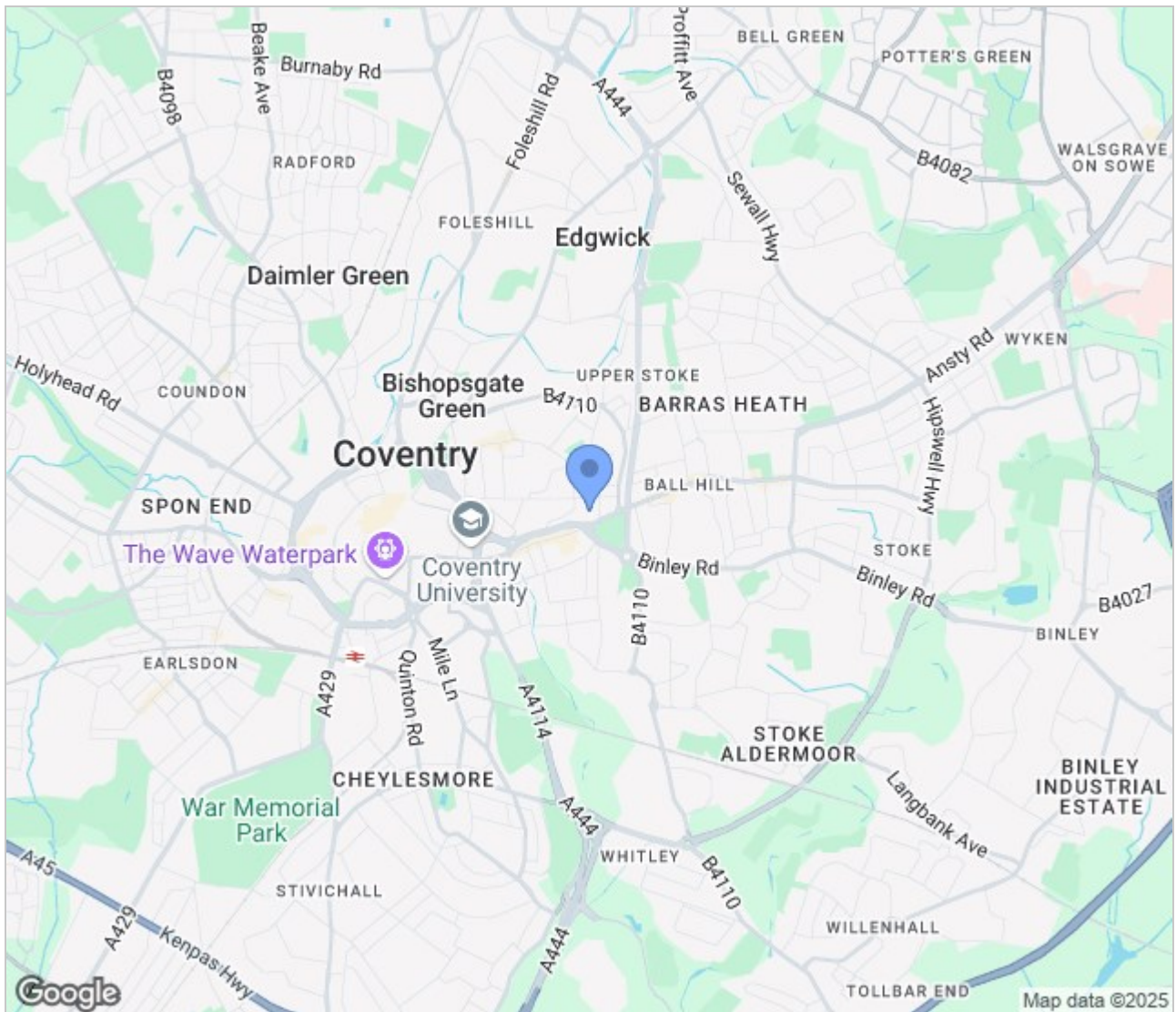
- * Large communal kitchen / living area, spacious and integrated including a large 5 ring gas hob & oven, dishwasher, fridge/freezer & washer dryer
- * Ground floor WC
- * Each double bedroom benefits from an en-suite shower room, study area, built in wardrobe, TV & fully furnished
- * Low maintenance garden to the rear of the property

Freehold property with gas central heating & double glazed throughout as well as being fully compliant to HMO regulations (HMO Licence is in place)

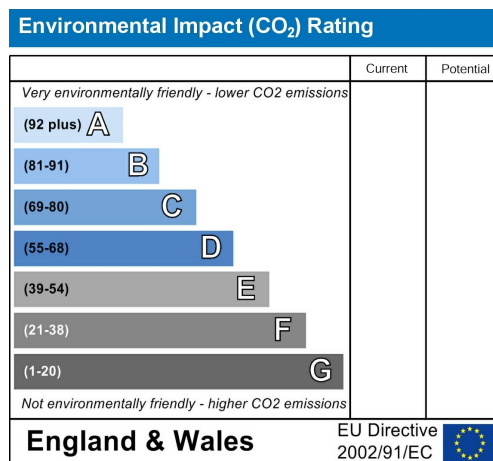
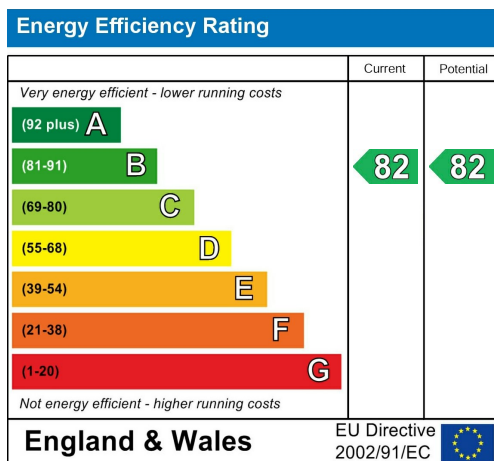
Offers in the region of £325,000



Area Map



Energy Efficiency Graph



These particulars, whilst believed to be accurate are set out as a general outline only for guidance and do not constitute any part of an offer or contract. Intending purchasers should not rely on them as statements of representation of fact, but must satisfy themselves by inspection or otherwise as to their accuracy. No person in this firm's employment has the authority to make or give any representation or warranty in respect of the property.

GLB Property Services Ltd
9 Hay Lane
Coventry, CV1 5RJ

T. 02476 433416

info@glbpropertyservices.com
www.glbpropertyservices.com

